



Welcome to Gorwelion Newydd

We are a portfolio pupil referral service with Wrexham County Borough Council, providing education for secondary aged young people who are unable to attend mainstream school. We operate across three sites, namely; Stwdio Pen-y-Cae, Haulfan and Stwdio Hafod that specialise in supporting individual pupil needs relating to behaviour and mental health.

We recognise that some children and young people will face real difficulties in their lives that have created significant barriers to learning. Our aspiration is to re-build self-confidence and esteem, in order for children and young people to successfully re-engage with their learning.

We are proud of our friendly and welcoming approach to all children, young people and families. Whatever challenging circumstances you find yourselves in, we guarantee a fresh start and fantastic opportunity for all.

At Gorwelion Newydd we provide a fresh start for all young people regardless of their previous past experiences. We place high regard to developing positive relationships amongst staff, young people and their families. We believe a true team and partnership approach will maximise the potential of every young person.



Stwdio Hafod Short Stay and De-Escalation Education Placement

We recognise that mainstream schools provide the best educational opportunities for young people. However, many young people can find mainstream schools overwhelming and require a 'short stay' at a different educational provision.

The overarching principle of a short stay placement at Stwdio Hafod is to de-escalate situations and provide additional support for young people to successfully maintain their mainstream school placement.

An educational placement at Stwdio Hafod will be based on a comprehensive assessment of needs and involve parents and carers to provide support to their child, which, in turn, will lead to improved outcomes. The assessment will include consideration of wider needs as

well as those related to learning. A clear partnership approach is adopted from the outset. This will initially focus on how Stwdio Hafod, the referring mainstream school, parents and carers can work together to support successful integration. These discussions will take place at a partnership-planning meeting.

The standard length of placement time is 12 weeks. 'Short Passport' placements can be agreed with schools on request that specifically target individual pupil needs or where pupils have exceeded targets and expectations. The mainstream school will be expected to maintain 'attachment' with Stwdio Hafod and the young person throughout the placement. Pupils are expected to wear their mainstream school uniform.

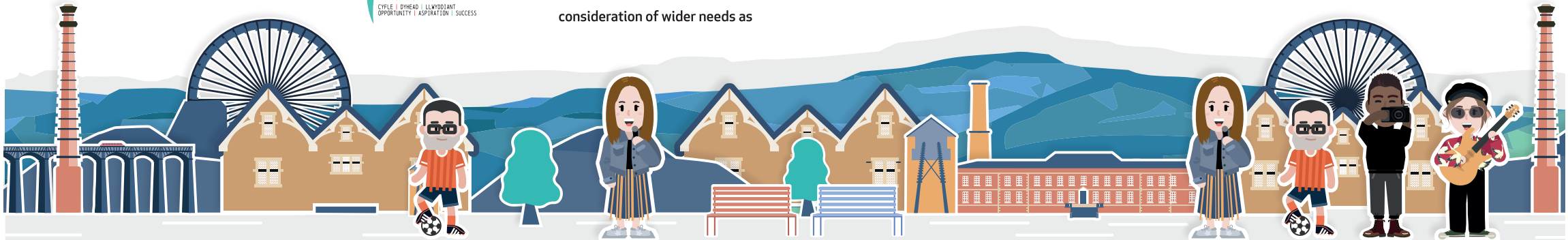
Vision and Values

We provide an **opportunity** for all young people on our roll to access a high quality, stimulating and efficient education provision that will promote each young person's personality, talents and abilities to the fullest. Our tailored approach meets the individual needs of young people developing opportunities for learning both inside and outside the classroom, and through academic, vocational and bespoke learning pathways. We provide a safe environment that supports the development of health and well-being of young people. We promote the importance and value of Welsh culture and language.

We embed a high **aspiration** for all young people on our roll to embrace the opportunities

afforded to them in order that they may fulfil their potential as empowered individuals and as members of groups and communities, thereby improving their life chances.

We recognise and celebrate the **success** of our young people on roll of Gorwelion Newydd. We recognise that for some young people small steps of success are a significant achievement. We will support young people to make substantial changes in their lives and encourage them to gain knowledge, understanding, positive attitudes and values and make constructive use of their skills resources and time.



Additional Learning Provision

Stiwdio Hafod is staffed by fully qualified teachers, pastoral and support staff. All staff have broad experience in successfully engaging 'hard to reach' young people back in to education.

The priority of the placement is to improve pupil confidence and self-esteem to support a successful return to school. There is a strong emphasis on developing active learning and a variety of activities based within the classroom and wider community.

Stiwdio Hafod will support pupil engagement in learning through a

range of 'interventions'. These interventions will form part of a tailored individualised package that will focus on communication, social, emotional and behavioural development in addition to an emphasis on literacy and numeracy development.

All Gorwelion Newydd staff are undertaking 'Trauma Awareness, Trauma Responsive and Trauma Inclusive' training as an embedded whole service approach to support pupils who have experienced adverse childhood experiences.



Partnership Working

A proportion of our young people who attend Stiwdio Hafod may have identified or unidentified Additional Learning Needs. Local Authority Education & Early Intervention services will target

support and intervention for young people who attend Stiwdio Hafod. This support has an emphasis on a sustainable approach that will support a successful return to school.

Contact



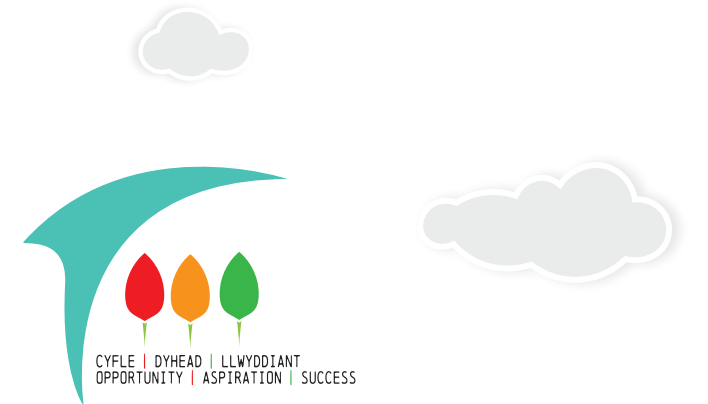
Stiwdio Hafod, Deva Way, Wrexham, LL13 9HD

01978 594100

mailbox@prs.wrexham.school.uk

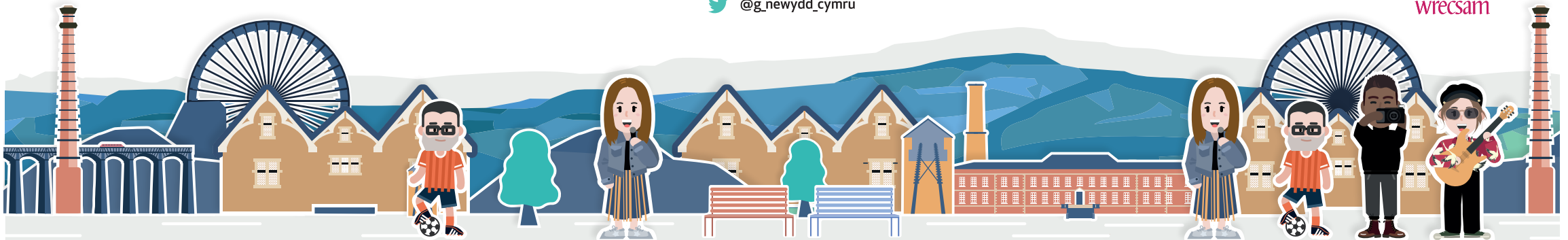
www.newhorizons.cymru

@g_newydd_cymru



Welcome to Gorwelion Newydd!

Opportunity, Aspiration, Success



wrexham
COUNTY BOROUGH COUNCIL
CYNGOR BWRDEISTREF SIROL
wrecsam